

7.1.3 FACILITIES IN THE INSTITUTION FOR THE MANAGEMENT OF DEGRADABLE AND NON-DEGRADABLE WASTE(2021-22)

GEOTAGGED PHOTOGRAPHS



Education to Eternity

**JAIDEV EDUCATION SOCIETY'S
J D COLLEGE OF ENGINEERING & MANAGEMENT**
POST: VALNI, AT: KHANDALA, KATOL ROAD, NAGPUR - 441 501
(An Autonomous Institute with NAAC A Grade)

7.1.3 FACILITIES IN THE INSTITUTION FOR THE MANAGEMENT OF DEGRADABLE AND NON-DEGRADABLE WASTE

J D College of Engineering & Management has initiated measures towards environmental sustainability & considerable attention has been paid to minimize the production of waste in the campus as well as ensuring proper waste disposal. The college recognizes that sustainable and holistic waste management is essential in reducing its environmental footprint and providing a safe and healthy work environment for teaching and non teaching employees, students, and visitors.

The waste generated in the campus includes solid waste and liquid waste- both of biodegradable and non-biodegradable nature, biomedical, chemical and e-waste. No classified hazardous waste is generated in the campus.

1. SOLID WASTE MANAGEMENT

Waste collection bins are available on every floor in the academic, administrative buildings & laboratories. Campus is cleaned daily by the cleaning staff under the supervision of Cleaning & maintenance in charge. There are separate bins for bio degradable and non bio degradable waste. The bio degradable waste includes leaves from the garden area, vegetable peels and food wastages from the canteen. The bio degradable waste is disposed off into the dumping yard especially designated for the purpose, from where it is transferred to compost pits for formation of manure. The non bio degradable waste includes paper which is sold to vendors for recycling.



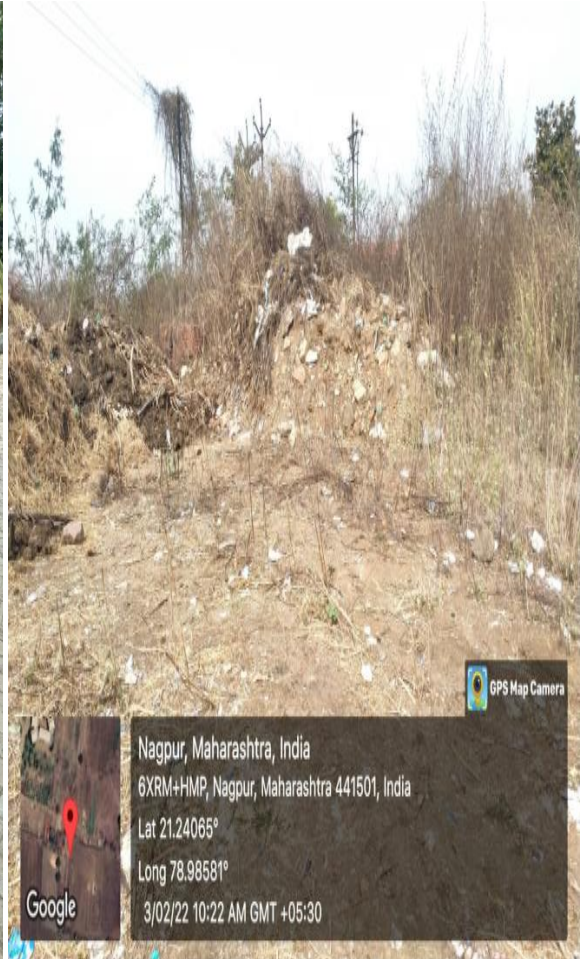
Dustbins in the premises



Cleaning staff



Solid waste being collected in the campus



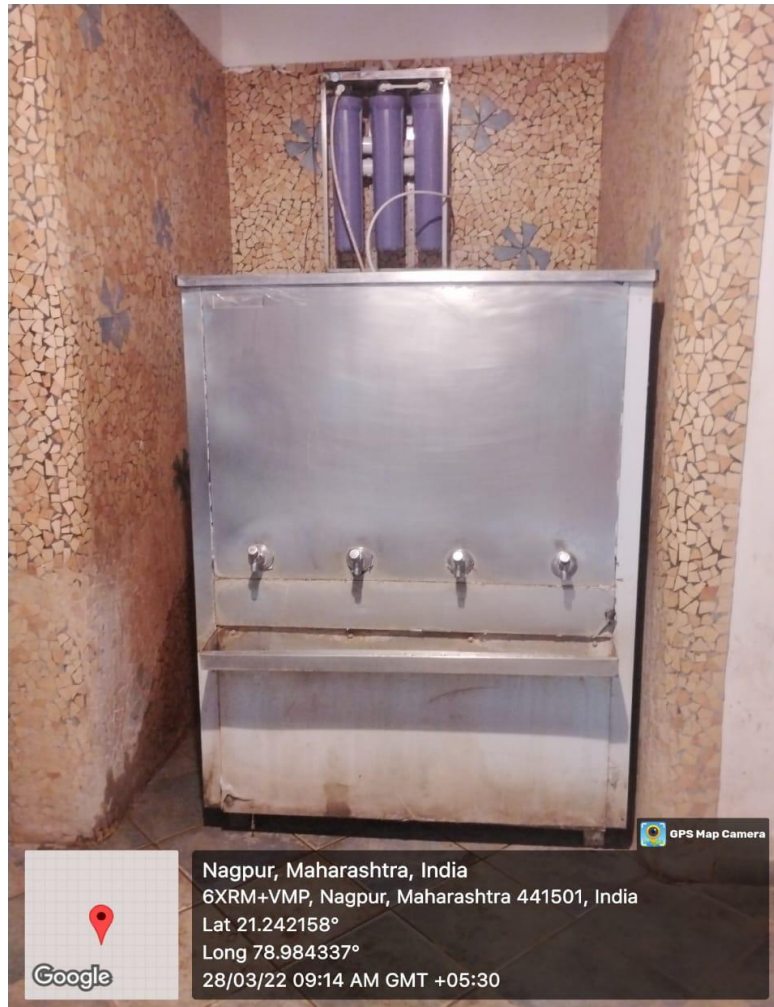
Dumping Yard



Principal
Principal
J D College of Engineering & Management
Khandala, Katol Road
Nagpur-441501

2. LIQUID WASTE MANAGEMENT

Liquid wastage generated from canteen and toilets is segregated. Waste water generated from the sanitary facilities is disposed off into septic tanks located in the campus and canteen waste water is used for gardening, watering trees etc. The groundwater is recycled for drinking purposes using RO filters at various locations in the campus.



RO Filter in the campus



Principal
J D College of Engineering & Management
Khandala, Katol Road
Nagpur-441501

3. BIOMEDICAL WASTE MANAGEMENT

Bio medical waste generated in the campus includes sanitary napkins, which are disposed of using incinerators installed in girls' common room.



Sanitary pads vending machine & Incinerator



4. E-WASTE MANAGEMENT

E-waste or electronic waste is created when an electronic product is discarded after the end of its useful life. E-waste mainly includes obsolete electronic devices, such as computer systems, servers, monitors, compact discs (CDs), printers, scanners, copiers, calculators, fax machines, battery cells etc. E-waste is disposed off through vendors.



E waste in the campus



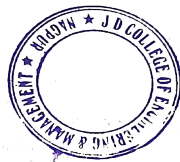

Principal
J D College of Engineering & Management
Khandala, Katol Road
Nagpur-441501

5. WASTE RECYCLING SYSTEM

The bio degradable waste is disposed off into the dumping yard especially designated for the purpose, from where it is transferred to compost pits for formation of manure.



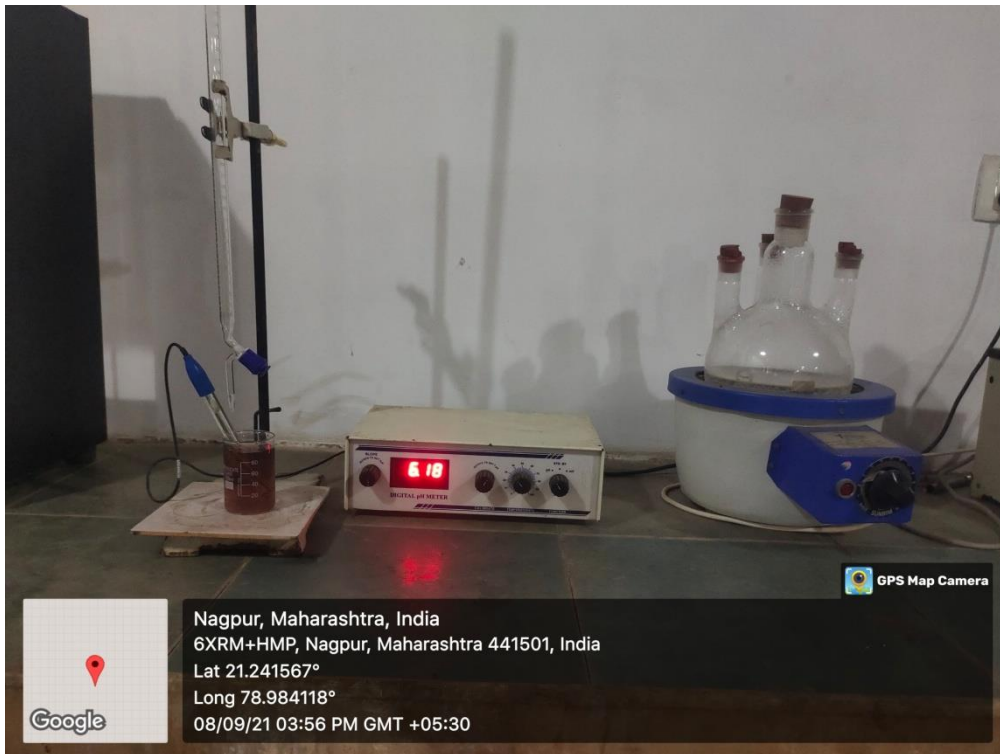
Compost pit



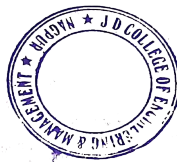
Principal
J D College of Engineering & Management
Khandala, Katol Road
Nagpur-441501

6. HAZARDOUS CHEMICALS WASTE MANAGEMENT

Hazardous chemicals are not used in the laboratories. Acids in diluted form are used in engineering chemistry laboratory, which are discharged directly. When necessity arises to utilize a strong acid or base, they are neutralized before discharging. No radioactive elements of any form are used in the campus and thus its waste is not generated in the campus



Chemical waste neutralization in Chemistry Lab



Principal
J D College of Engineering & Management
Khandala, Katol Road
Nagpur-441501